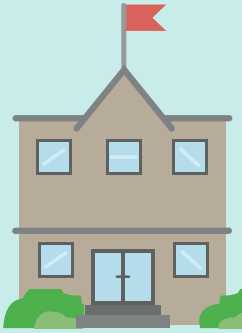




Sandusky City Schools Learning Models

ALL-IN



HYBRID



REMOTE



LEVEL 1

- Health checks including temperature assessment at home by everyone before entering school
- Face coverings required for staff & students
- Physical distancing guidelines followed with 6' separation
- Hand sanitizer available in every classroom
- Cleaning supplies to sanitize work areas will be available throughout the work day
- Lunchroom space expanded to other areas
- Water fountains closed (students can bring water bottles)
- No visitors or volunteers
- No shared student supplies
- One-way hallways when possible
- No field trips
- No large group student events
- Before & after care operational

LEVEL 2

- Health checks including temperature, assessment at home before entering school
- Face coverings required for staff and students
- Physical distancing guidelines followed with 6' separation
- Special Education services may be adjusted
- Hand sanitizer available in every classroom
- Cleaning supplies to sanitize work areas will be available throughout the day
- Lunchroom space expanded to other areas
- Water fountains closed (students will be able to bring water bottles)
- No visitors or volunteers
- No shared student supplies
- No lockers (students will be allowed to carry backpacks)
- One-way hallways when possible
- No field trips
- No large group student events
- Before & after care students attend on in-class days if available
- Attendance taken on in-class days
- Athletic games/practices may be modified
- Extra-curricular activities may be modified

LEVEL 3

- Health checks including temperature, assessment at home before entering school
- Face coverings required for staff and students
- Physical distancing guidelines followed with 6' separation
- Special Education services may be adjusted
- Hand sanitizer available in every classroom
- Cleaning supplies to sanitize work areas will be available throughout the day
- Lunchroom space expanded to other areas
- Water fountains closed (students will be able to bring water bottles)
- No visitors or volunteers
- No shared student supplies
- No lockers (students will be allowed to carry backpacks)
- One-way hallways when possible
- No field trips
- No large group student events
- Before & after care students attend on in-class days if available
- Attendance taken on in-class days
- Athletic games/practices may be modified
- Extra-curricular activities may be modified

LEVEL 4

- Breakfast/lunch grab and go at select buildings/and or facilities
- Special Education services may be adjusted
- No athletic games/practices
- No extra-curricular activities/band/choir/orchestra/theatre performances
- No field trips
- No large group student events
- Before and after care not provided
- Attendance taken daily during Google teacher interactions