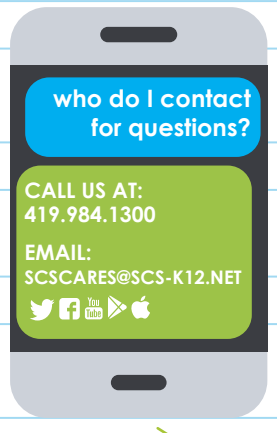


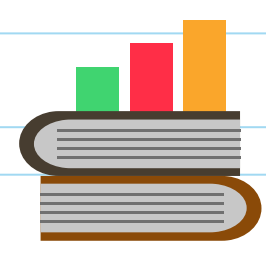
# A DAY IN THE LIFE OF A SANDUSKY PRIMARY SCHOOL STUDENT (VIRTUAL SAMPLE)



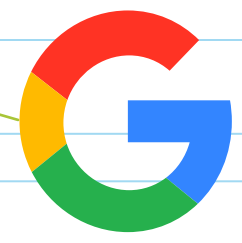
INSTRUCTIONAL FRAMEWORK "SEED"



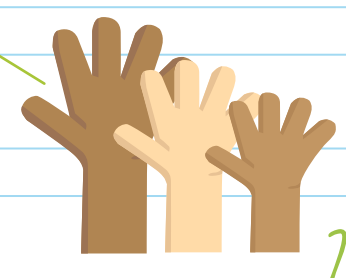
1ST AND 2ND GRADE



EXAMPLES OF INSTRUCTION SCHEDULES:



WEEKLY LIVE DIRECT INSTRUCTION THROUGH GOOGLE



4 HOURS OF ELA AND MATH PER WEEK

2 HOURS AND 40 MINUTES OF SCIENCE AND SOCIAL STUDIES PER WEEK



DAILY LIVE SESSIONS FOR ART, SOCIAL-EMOTIONAL LEARNING, MUSIC, LIBRARY, COMPUTER OR PE



STAFF WILL HAVE OFFICE HOURS FOR FAMILIES TO CONTACT THEM WITH ANY QUESTIONS OR CONCERNS



LESSONS WILL BE RECORDED FOR THOSE FAMILIES THAT MAY NOT BE ABLE TO LOG ON AT THE ASSIGNED TIMES